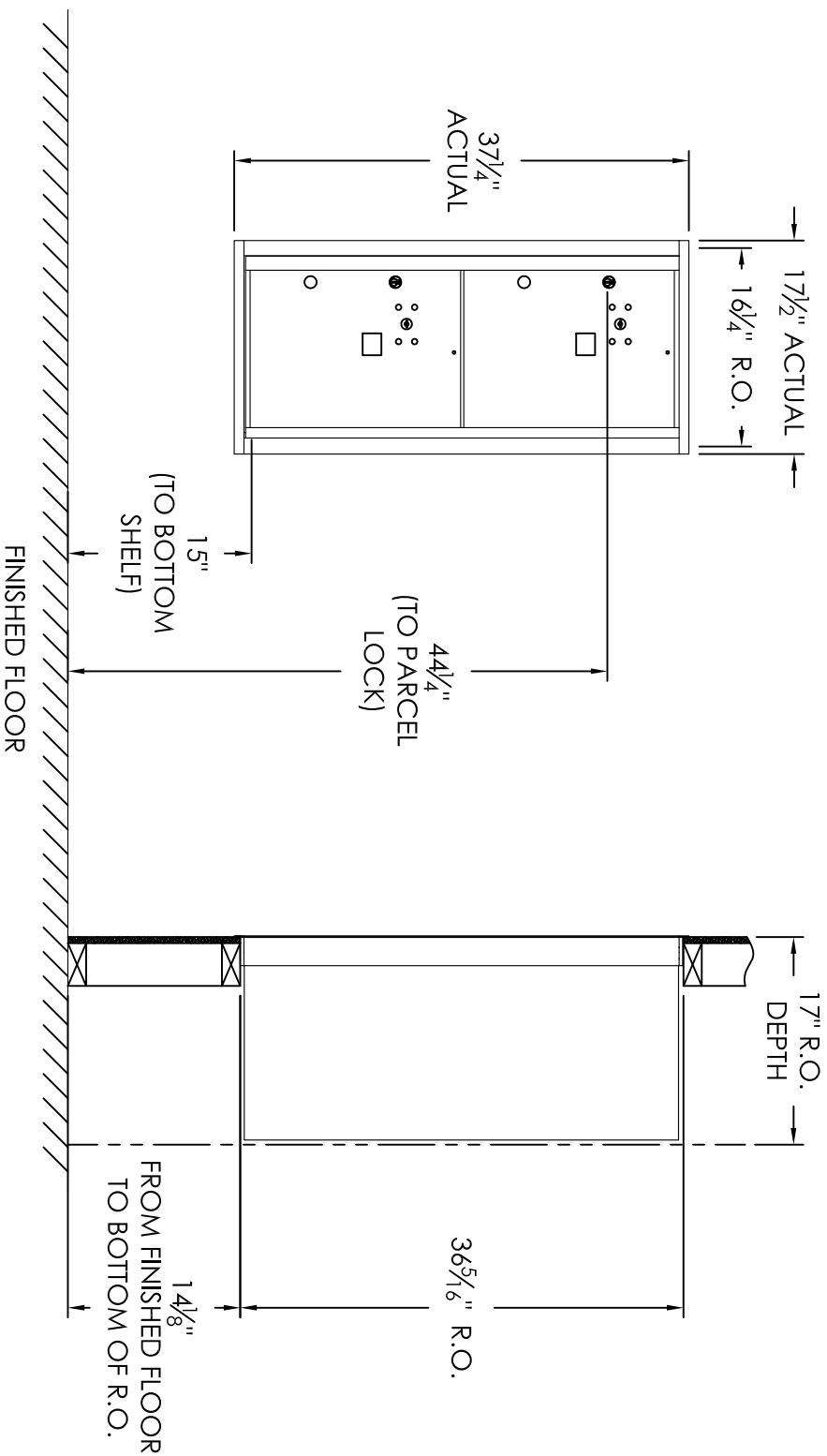


Versatile™ 4C Mailbox, 4CADS-2P



COMPARTMENT CHART

DESCRIPTION	COMPARTMENT	COMPARTMENT SIZE	QTY.
PARCEL	PLS	17" H x 12" W x 15" D	2

PRODUCT SERIES: VERSATILE™ 4C FRONT LOAD MAILBOX

AF FLORENCE
manufacturing company

5935 Corporate Drive • Manhattan, KS 66503
 www.florencemailboxes.com • (800) 275-1747
 A GIBRALTAR INDUSTRIES COMPANY

MODEL: 4CADS-2P
 SCALE: NONE
 DRAWING NUMBER: 4CADS-2PCS

REV: A
 LAST REV DATE: 5/08/2014
 DRAWN BY: SDH

- Notes:
- This module meets the USPS STD-4C requirements for installation defined below when the mailbox is installed per the dimensions provided on this drawing.
 - At least one customer compartment shall be positioned less than 48" above finished floor (AFF).
 - No parcel locker (interior bottom shelf) shall be positioned less than 15" AFF.
 - No patron (tenant) lock shall be positioned more than 67" AFF.
 - No customer compartment (interior bottom shelf) shall be positioned less than 28" AFF.
 - The USPS Arrow lock shall be positioned 36"-48" AFF.
 - This 4C mailbox can also be used for private applications.
 - The rough opening width for multi-unit 4C installations = (the sum of all actual unit widths) - 1 1/8".