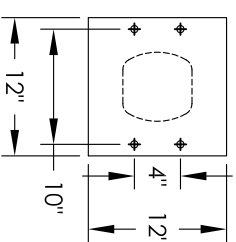
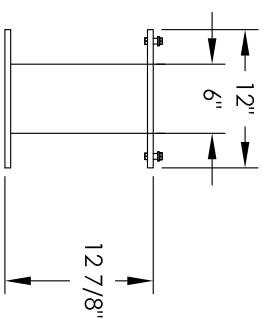
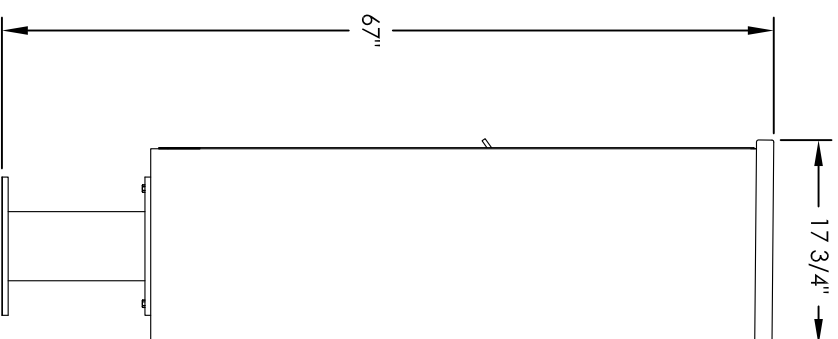
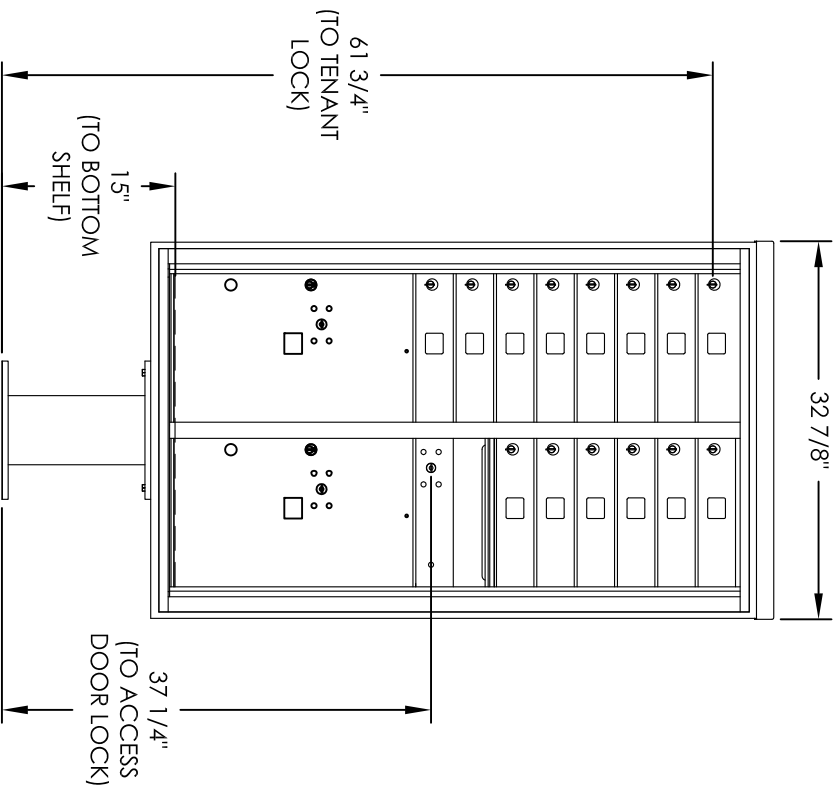


Versatile™ 4C Pedestal Mount Mailbox, 4C14D-14-P




PEDESTAL DETAIL

COMPARTMENT CHART

| DESCRIPTION | COMPARTMENT | COMPARTMENT SIZE | QTY. |
|---------------|-------------|---------------------------|------|
| MAILBOX | MB1 | 3" H x 12" W x 15" D | 14 |
| OUTGOING MAIL | OM2 | 6-1/2" H x 12" W x 15" D | 1 |
| PARCEL | PL6 | 20-1/2" H x 12" W x 15" D | 2 |

PRODUCT SERIES: VERSATILE™ 4C PEDESTAL MOUNT MAILBOX

- NOTES:
1. 4C pedestal units are for private applications only / not USPS Approved.
 2. May be installed outside or inside - see foundation specification details within the 4C Installation Manual.



5935 Corporate Drive • Manhattan, KS 66503
www.fiorencemailboxes.com • (800) 275-1747
A GIBRALTAR INDUSTRIES COMPANY

| | | | |
|----------------|-------------|---------------|-----------|
| MODEL | 4C14D-14-P | REV | A |
| SCALE | NONE | LAST REV DATE | 5/12/2014 |
| DRAWING NUMBER | 4C14D-14PCS | DRAWN BY | RAK |