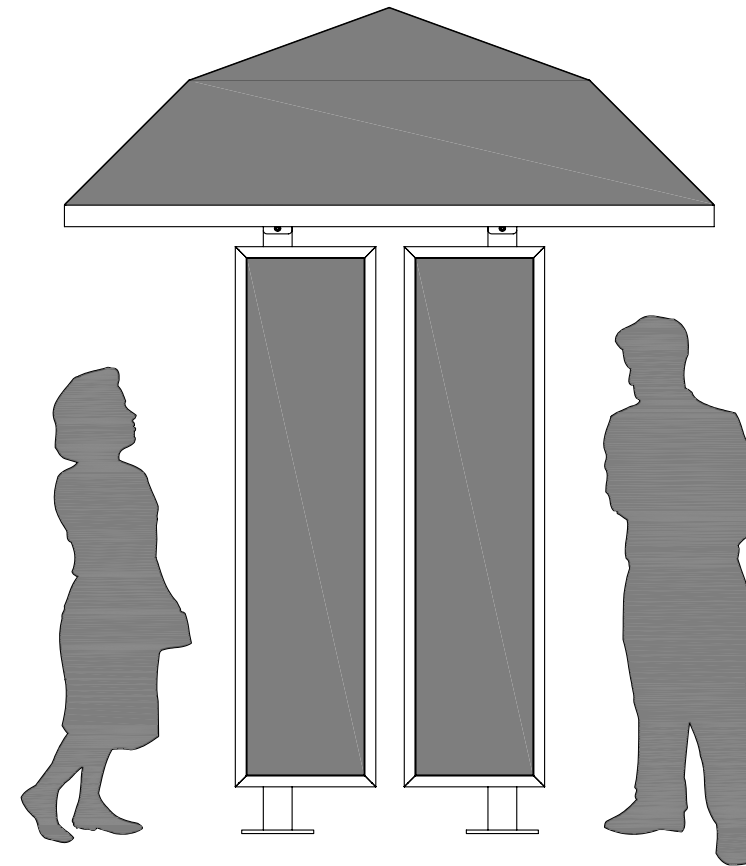
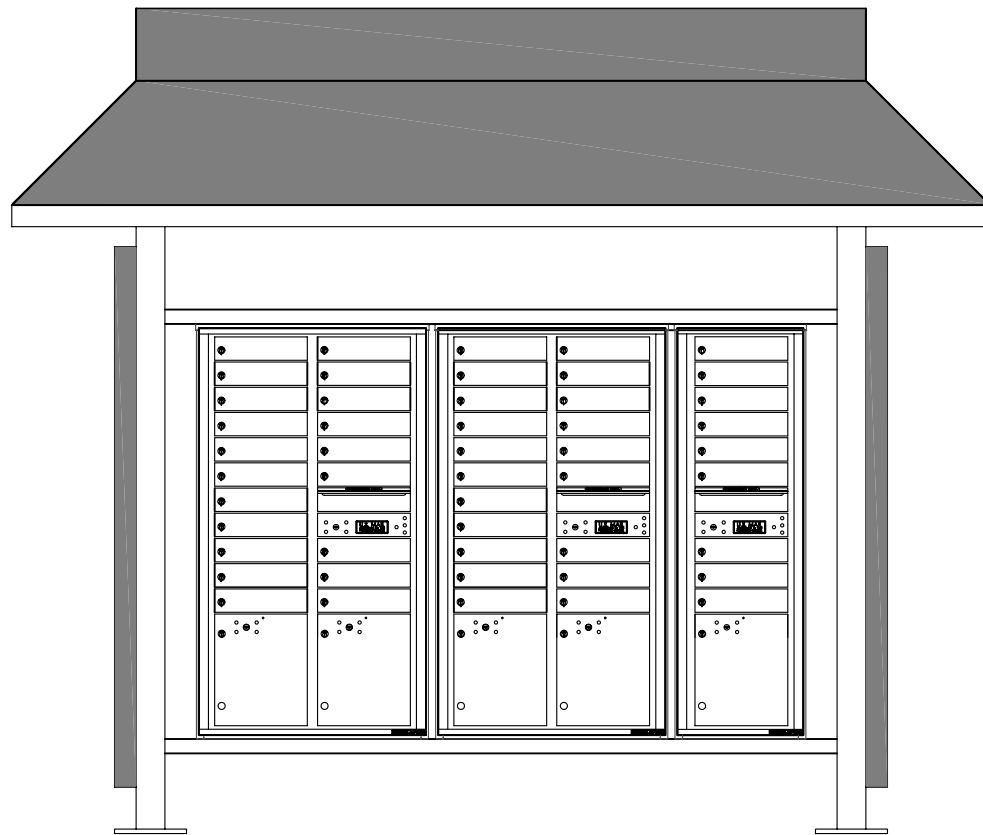


vario™ 4C configurable mail shelter- including mailboxes


(98) TENANT COMPARTMENTS, (10) PARCEL LOCKERS



MAILBOXES AS SHOWN MOUNTED ON FRONT AND BACK OF SHELTER.

NOTES:

1. (98) TENANT DOORS, AND (10) PARCEL LOCKERS
2. (1) VAR3B - VARIO SHELTER BACK TO BACK
3. (4) 4CFT2-20, AND (2) 4CFT1-9 MAILBOX MODULES
4. ROOF AND SIDE PANEL FINISHING PROVIDED BY OTHERS.

PRODUCT SERIES: vario™shelter with versatile™4C mailboxes					
 5935 Corporate Drive • Manhattan, KS 66503 www.auth-florence.com • (800) 275-1747 A GIBRALTAR INDUSTRIES COMPANY	MODEL	VAR3B-F	REV	-	
	SCALE	NONE	LAST REV DATE 2/08/2008		
	DRAWING NUMBER	VAR3B-F	DRAWN BY	AFD	SHEET

AF FLORENCE

manufacturing company

5935 Corporate Drive • Manhattan, KS 66503
 www.auth-florence.com • (800) 275-1747

A GIBRALTAR INDUSTRIES COMPANY 

Product ID	Description	Number of tenant compartments	Number of parcels	Total estimated retail price *	Estimated retail price per tenant compartment (includes parcels) *
(1) VAR3B-F (4) 4CFT2-20 (2) 4CFT1-9	Florence vario™ mail shelter with versatile™ 4C mailboxes	98	10	\$12,829.00	\$130.91
(4) 4CFT2-20 (2) 4CFT1-9	Florence versatile™ 4C mailboxes only	98	10	\$6,594.00	\$67.29
(6) 1570-16	Florence vital™ cluster box units (1570 series)	96	12	\$6,876.00	\$71.63

* Retail prices are estimates based on Minimum Advertised Price (MAP) established by manufacturer.

* Prices above do not include freight or sales taxes.

* Cost per mailbox/tenant compartment may be lower if alternate method of receiving parcels is available. Parcel mix above established using the USPS STD-4C regulation of 10:1 mailbox to parcel ratio.

* Final pricing may vary based on geographic region and/or services provided. Contact an authorized Florence dealer for quote.