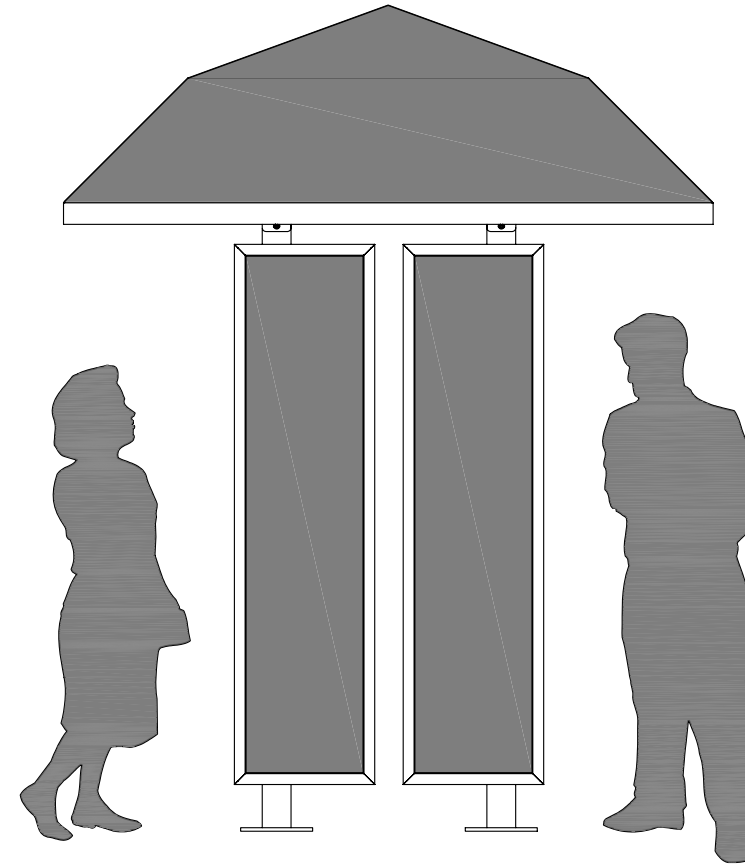
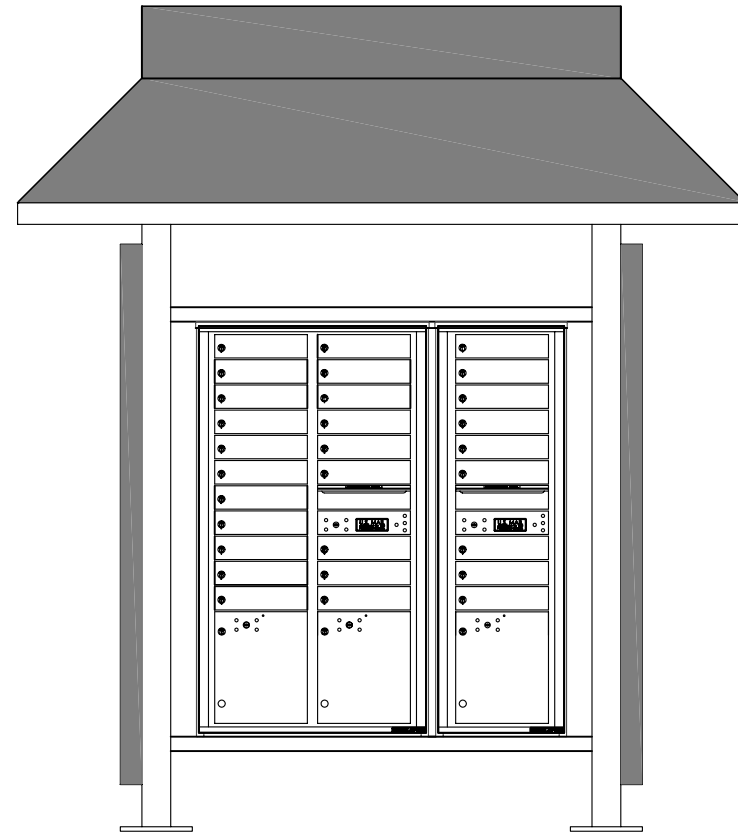


# vario™ 4C configurable mail shelter- including mailboxes


(58) TENANT COMPARTMENTS, (6) PARCEL LOCKERS



MAILBOXES AS SHOWN MOUNTED ON FRONT AND BACK OF SHELTER.

**NOTES:**

1. (58) TENANT DOORS, AND (6) PARCEL LOCKERS
2. (1) VAR2B - VARIO SHELTER BACK TO BACK
3. (2) 4CFT2-20, AND (2) 4CFT1-9 MAILBOX MODULES
4. ROOF AND SIDE PANEL FINISHING PROVIDED BY OTHERS.

PRODUCT SERIES: vario™shelter with versatile™4c mailboxes					
 5935 Corporate Drive • Manhattan, KS 66503 www.ath-florence.com • (800) 275-1747 A GIBRALTAR INDUSTRIES COMPANY	MODEL	VAR2B-F	REV	-	
	SCALE	NONE	LAST REV DATE 2/08/2008		
	DRAWING NUMBER	VAR2B-F	DRAWN BY	AFD	SHEET

# AF FLORENCE

manufacturing company

5935 Corporate Drive • Manhattan, KS 66503  
 www.auth-florence.com • (800) 275-1747

A GIBRAITAR INDUSTRIES COMPANY 

Product ID	Description	Number of tenant compartments	Number of parcels	Total estimated retail price *	Estimated retail price per tenant compartment (includes parcels) *
(1) VAR2B-F (2) 4CFT2-20 (2) 4CFT1-9	Florence vario™ mail shelter with versatile™ 4C mailboxes	58	6	\$9,064.00	<b>\$156.28</b>
(2) 4CFT2-20 (2) 4CFT1-9	Florence versatile™ 4C mailboxes only	58	6	\$4,017.00	<b>\$69.26</b>
(3) 1570-16 (1) 1570-13	Florence vital™ cluster box units (1570 series)	60	7	\$4,552.00	<b>\$75.87</b>

\* Retail prices are estimates based on Minimum Advertised Price (MAP) established by manufacturer.

\* Prices above do not include freight or sales taxes.

\* Cost per mailbox/tenant compartment may be lower if alternate method of receiving parcels is available. Parcel mix above established using the USPS STD-4C regulation of 10:1 mailbox to parcel ratio.

\* Final pricing may vary based on geographic region and/or services provided. Contact an authorized Florence dealer for quote.