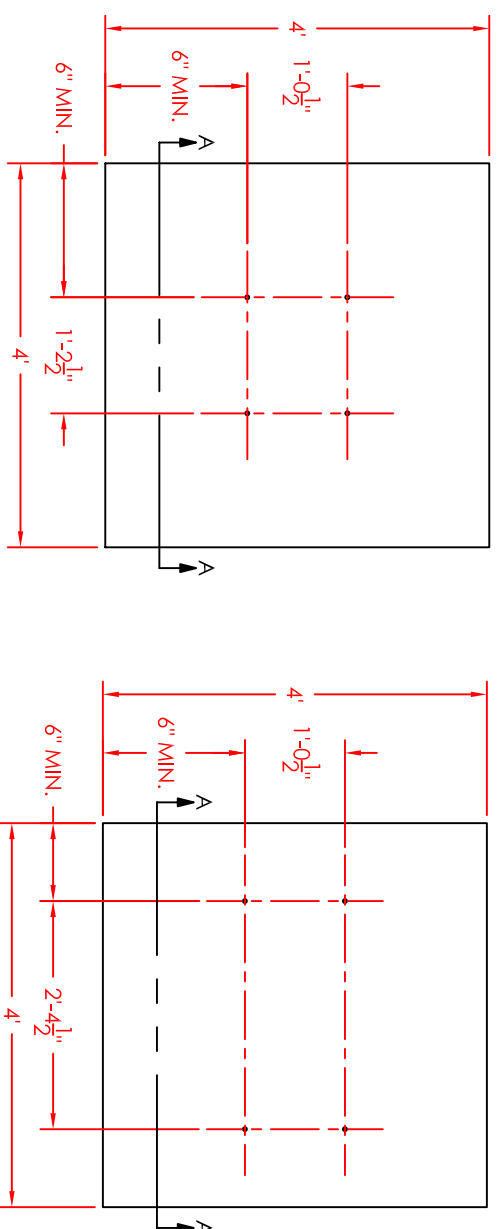


## Vario Depot™ Foundation Plan

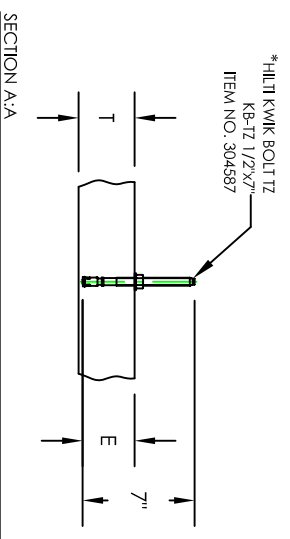


SINGLE COLUMN CONFIGURATION

DOUBLE COLUMN CONFIGURATION

### STRUCTURAL NOTES:

THIS DESIGN INTENDED FOR THE SUPPORT OF VARIO DEPOT™ MAIL STAND KIT AS MANUFACTURED BY FLORENCE MANUFACTURING. CONCRETE SHALL HAVE A COMPRESSIVE STRENGTH OF 2,500 PSI TO 8,500 PSI. THE WATER/CEMENT RATIO SHALL NOT EXCEED .50 FOR ALL CONCRETE. REINFORCING STEEL SHALL BE PER LOCAL CODE REQUIREMENTS. ALL CONCRETE SHALL BE AIR ENTRAINED, 6(±) BY VOLUME.



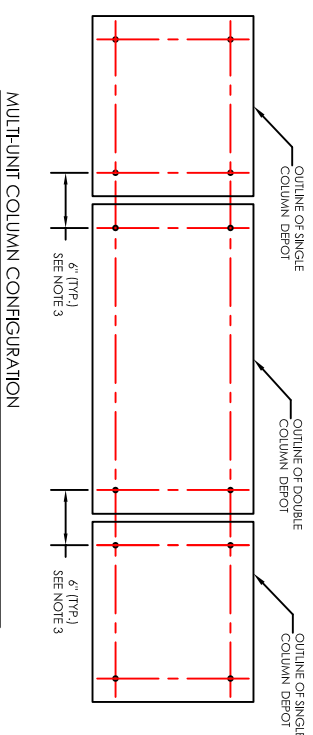
SECTION A:A

SCHEDULE OF FOUNDATION REQUIREMENTS

WIND LOAD	FOUNDATION THICKNESS (T) (in)	ANCHOR EMBEDMENT (E) (in)
90 mph	3.5	3 1/2" MIN.
150mph	9.5	4" MIN.

\*HILTI OR SIMILAR EXPANSION ANCHOR SYSTEM MUST BE USED TO ACHIEVE WIND RESISTANCE FACTORS.

- NOTES:
1. REINFORCING STEEL SHALL BE PER LOCAL BUILDING CODES
  2. ANCHOR BOLTS SHALL BE ASTM A36.
  3. MULTI-UNIT INSTALLATIONS MUST BE SEPARATED BY A MINIMUM OF 6" (BOLT TO BOLT) TO ACHIEVE A MINIMUM OF 1/8" BETWEEN UNITS.



MULTI-UNIT COLUMN CONFIGURATION

PRODUCT SERIES: VARIO DEPOT™ MAIL STAND FOUNDATION PLAN

<p>5935 Corporate Drive • Manhattan, KS 66503 www.florencemailboxes.com • (800) 275-1747 A GIBRALTAR INDUSTRIES COMPANY</p>	MODEL	DEPOT	REV	-
	SCALE	NONE	LAST REV DATE	2/18/2009
	DRAWING NUMBER	DEPF1	DRAWN BY	NBC