

Replacement of Combination Patron Lock

versatile™ 4C mailbox suites

Note: This may require opening the master loading doors if the key is not available. For Postal serviced units, the local U.S.P.S. will need to be contacted to have the access room opened for rear loading units or the unit opened for front loading units.

1. Open patron compartment door. If no key is available, open master loading door(s) (for front loading non parcel only units see instructions on page 6). For rear loading units access screw and lock washer from access room.

2. Unscrew the screw and lock washer and remove the locking cam.

3. Carefully note orientation of 90° stop cam and then remove it.

4. Using the 7/8" socket wrench remove the cylinder nut, large lock washer and spacer.

5. Replace the combination lock, taking great care to place the lock direction tab to the top of the door.

6. Reinstall the spacer, large lock washer and secure with the cylinder nut.

7. Change the combination if desired (see instructions page 30).

8. Reinstall the 90° stop cam (illustration shown in lock position).

9. Reinstall the locking cam and secure with screw and lock washer (illustration shown in lock position).

10. If opened previously, close master loading doors and lock Postal or private access door.

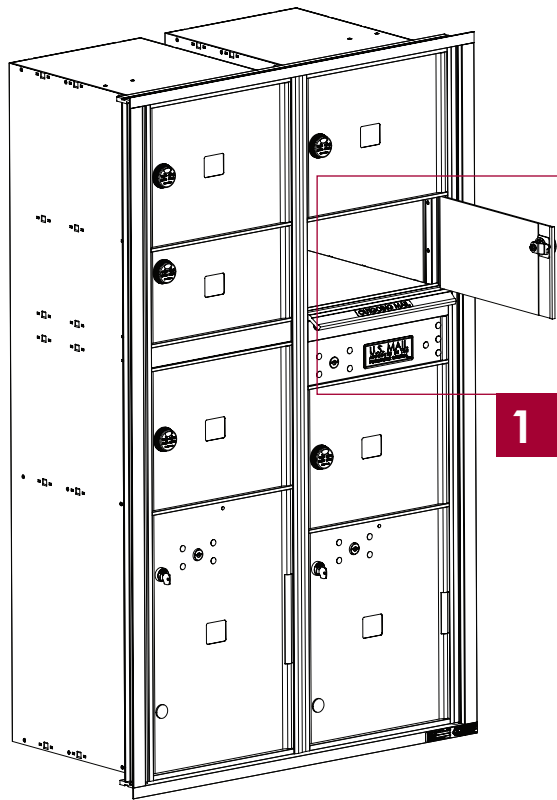
REQUIRED TOOLS

Phillips screw driver

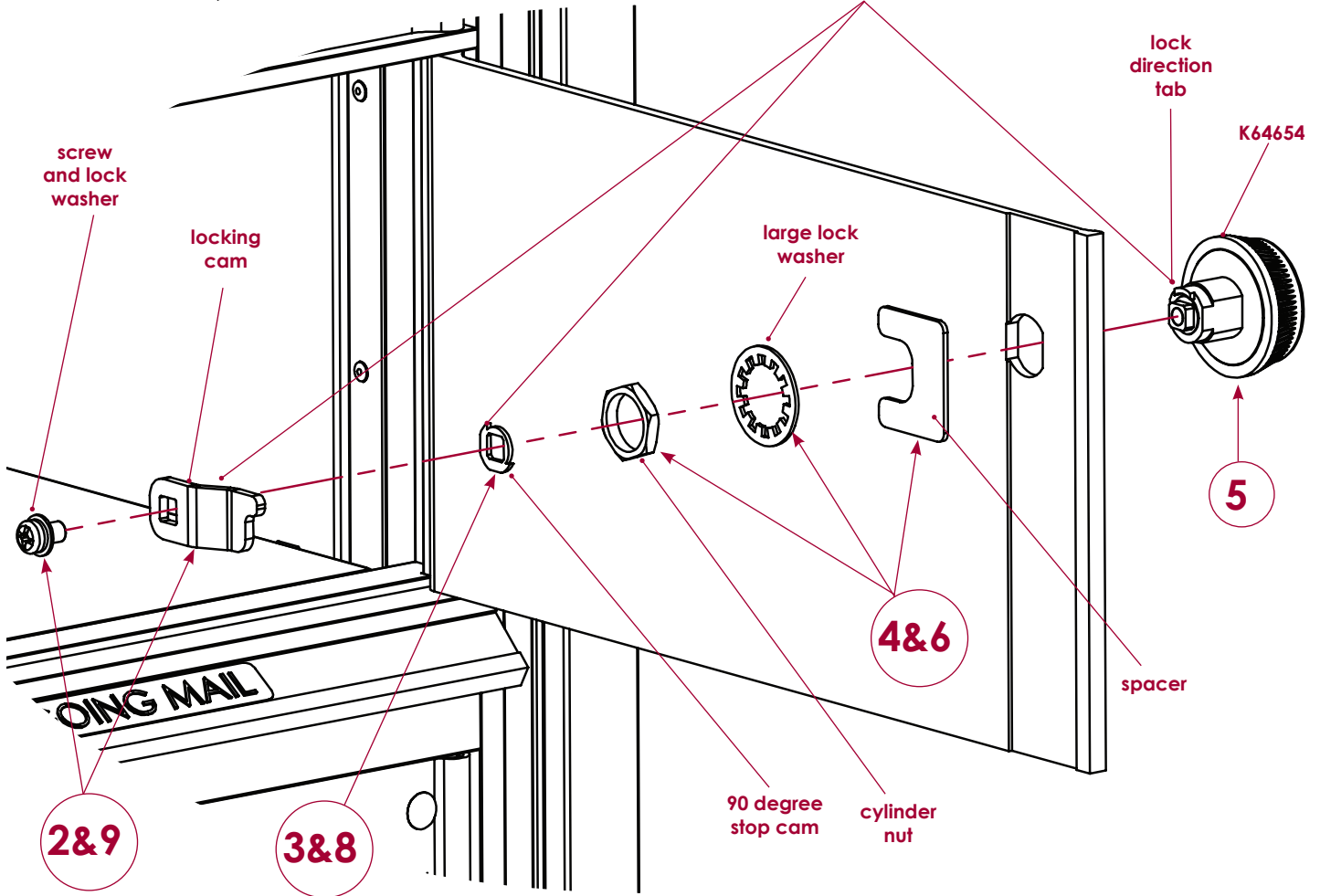
7/8" Socket wrench

PART #	DESCRIPTION
K64654	4-Dial Combination lock kit
-	Spacer (part of lock kit)
-	90° stop cam (part of lock kit)
-	Large lock washer (part of lock kit)
-	Cylinder nut (part of lock kit)
-	Locking cam (part of lock kit)
-	Screw and lock washer (part of lock kit)

Replacement of Combination Patron Lock



IMPORTANT:
Note orientation
with respect to
orientation of
locking cam.



Model # 4CCT2-XL Shown Above

Reset Combination of Combination Patron Lock

versatile™ 4C mailbox suites

Note: This is only possible if you know the current combination. If you do not, replace the lock (see instructions page 28).

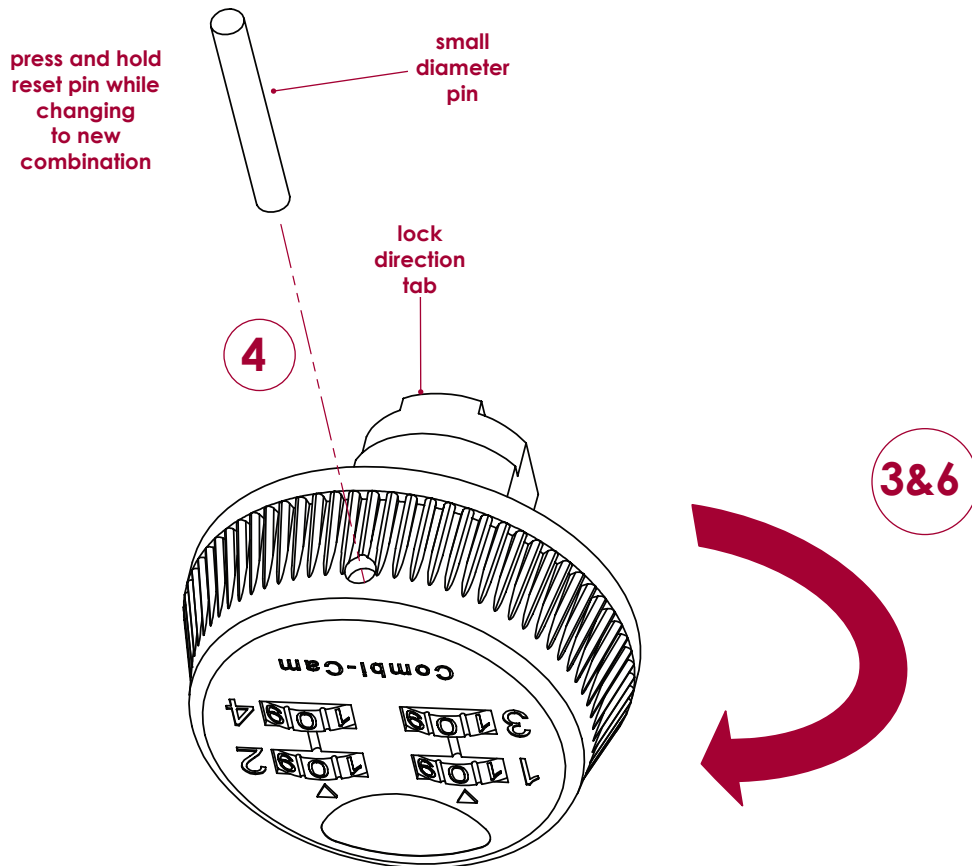
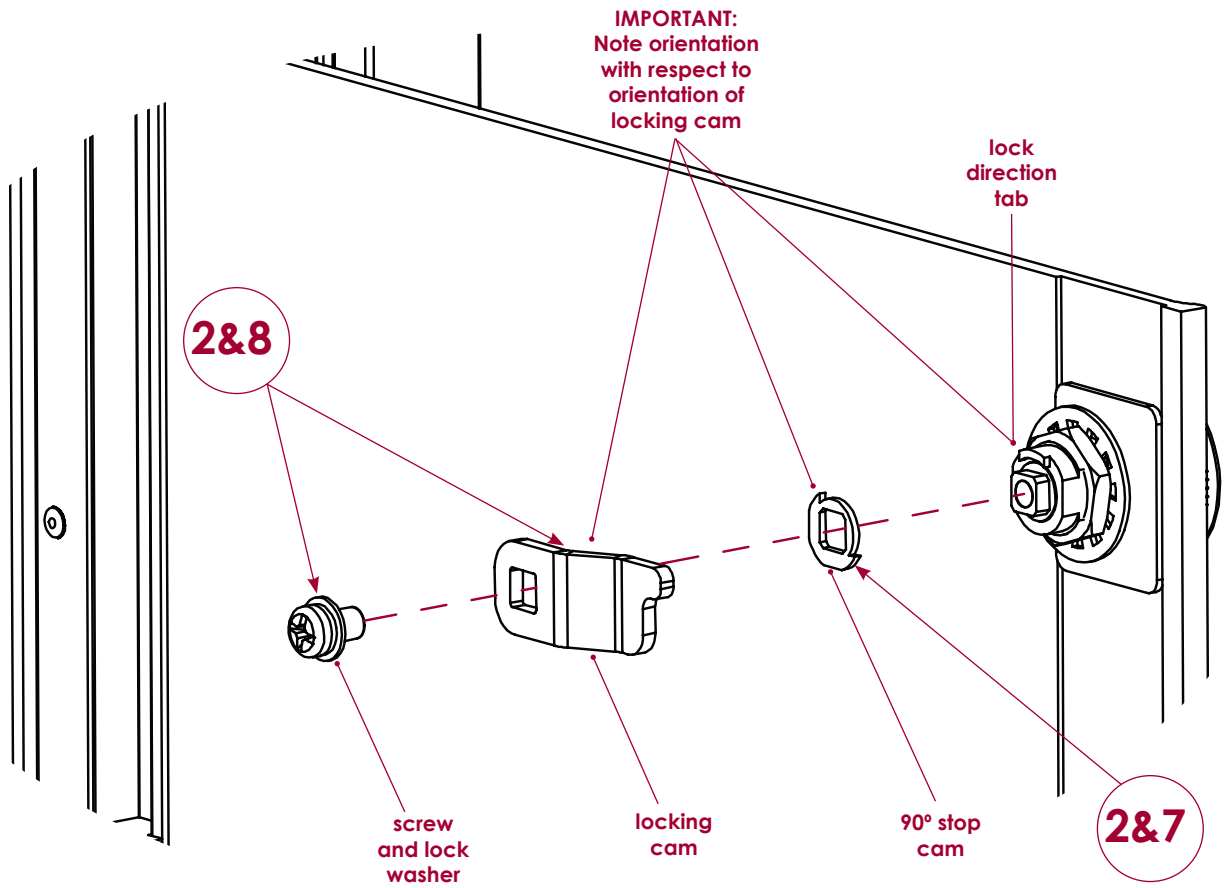
- 1.** Move lock to locked position.
- 2.** Remove the screw and lock washer, locking cam and 90° stop cam. Carefully note orientation of 90° stop cam.
- 3.** Rotate lock until reset pin access hole is on top (Combi-Cam name is upside down) to allow access to reset pin through the lock housing.
- 4.** Through the lock pin access hole, press and hold the reset pin while changing the dials to your choice of combination.
- 5.** Document new combination.
- 6.** Rotate lock until reset pin access hole is on the bottom (Combi-Cam name is right side up).
- 7.** Reinstall the 90° stop cam (illustration shown in lock position).
- 8.** Reinstall the locking cam and secure with screw and lock washer (illustration shown in lock position).

REQUIRED TOOLS

Phillips screw driver
Small diameter pin

PART #	DESCRIPTION

Reset Combination of Combination Patron Lock



Model # 4CCT2-XL Shown Above